

Windows 10 Device Onboarding

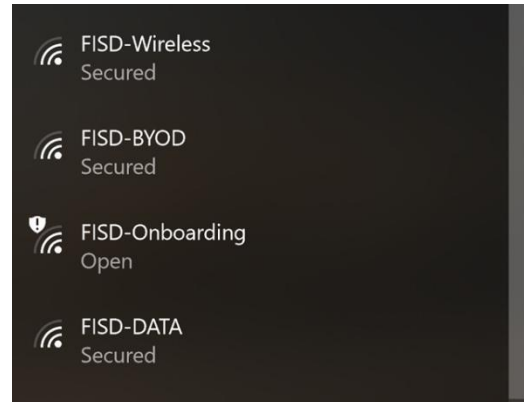
Note:

This process is for personal devices only. Windows 10 devices owned and managed by FISD will not work with this process.

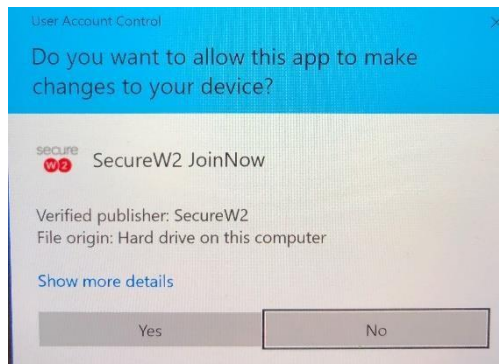
For FISD guests, use the guest username and password for your campus. The campus secretaries should have the information.

1. Click the network icon in the bottom right system tray.
2. This screen will popup. Select FISD-Onboarding.
3. You will be directed to this page. Select "Join Now".
If you are not redirected to this page, then open a browser. Type in this link:

<https://cloud.securew2.com/public/74350/FISD-BYOD>



4. Open the application that has downloaded.



5. If you get a blue SmartScreen warning, select the Run button.
6. Then select Yes.



Windows 10 Device Onboarding

7. Enter your computer username and password.
Ex: johnd Password1234
8. The progress will display as a blue bar below Configure | Authenticate | Joined.
9. When the progress bar is completed, Press Done.

